

MATRIX ACCESSORIES

MATRIX ACCESSORIES

NuMedical



996766



996767



996768

\$9.95
each

Tofflemire Retainers

Used to restore anatomic proximal contours and contact areas.

Size	Code
Senior	996766
Universal	996767
Junior	996768



\$31.95
each

Sectional Matrix Ring Forceps

Ideal for placing and securing matrix rings. Tips are coated with Tungsten Carbide.

Code
996814



\$52.95
each

Matrix Band/Wedge Forceps

Uniquely designed for easy and precise placement and removal of matrix bands and wedges. Tips are coated with Tungsten Carbide.

Code
996815



\$72.95
each

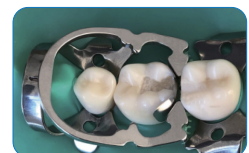
Matrix Forceps

Ideal for easy and precise placement and removal of matrix bands. Tips are coated with Tungsten Carbide.

Code
996816



\$45.55
each



Sectional Matrix Separator Ring, Single

Helps to achieve a strong contact point in a majority of restorations. With exceptional strength and suitable for all teeth. Used as a separator and to effectively hold the wedge and matrix in place.

Code
993136

MATRIX ACCESSORIES

MATRIX ACCESSORIES



\$47.95
each



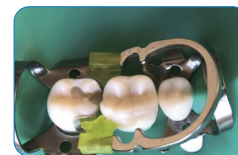
Sectional Matrix Separator Ring, Double

Helps to achieve a strong contact point in a majority of restorations. With exceptional strength and suitable for all teeth. Used as a separator and to effectively hold the wedge and matrix in place.

Code
993137



\$61.95
each



Sectional Matrix Clip Ring, Stiff

With slightly stiffer silicone tips. Used to effectively hold the wedge and matrix in place.

Code
993138



\$64.95
each



Sectional Matrix Clip Ring, Soft

With soft silicone tips. Used to effectively hold the wedge and matrix in place. Recommended to be used on teeth with periodontitis or gingivitis.

Code
993139



\$1.05
/bag

10pcs /bag

Matrix Bands

Made from the highest quality medical grade stainless steel. Autoclavable up to 135°C.

Size	Code
#1 (0.04mm)	993108
#2 (0.04mm)	993106
#3 (0.04mm)	993110
#13 (0.04mm)	993112



\$18.90
/bottle

50pcs /bottle



See more details

Matrix Bands

Sectional matrix band refill pack for anteriors. BISCUPIDS: wide 4.5mm, thickness 0.038mm; MOLAR: wide 5.2mm, thickness 0.038mm; TALL MOLAR: wide 6.4mm, thickness 0.038mm. Molar with extensions: wide 6.4mm, thickness 0.038mm.

Type	Code
Biscupids	993140
Molar	993141
Tall Molar	993142
Molar with Extensions	993143

MATRIX ACCESSORIES

MATRIX ACCESSORIES



993134



993135

\$21.95
each

Polishing Strips

Ideal for finishing and polishing of adjacent surface after resin filling. Each box contains a roll of strip. Size: 4mm (W) x 6 metre (L)

Size	Code
Fine 30um	993134
Medium 50um	993135



\$4.95
each

Plastic Strip Roll

Plastic strip that is suitable for all requirements and ensures tight contacts on composites. Each box contains a roll of strip. Size: 9.5mm (W) x 15 metre (L)

Code
993127



993125



993126

\$21.95
each

Polishing Strips

Special techniques to ensure a smooth surface without grit stripping off when pulling through the interproximal contact. Being put in a convenient dispenser box. Ultrathin with strong & flexible material. Each box contains a roll of strip. Size: 2.5mm (W) x 6 metre (L)

Size	Code
Fine 30um	993125
Medium 50um	993126



\$21.95
each

Polishing Strips

Special techniques to ensure a smooth surface without grit stripping off when pulling through the interproximal contact. Being put in a convenient dispenser box. Ultrathin with strong & flexible material. Each box contains a roll of strip. Size: 4mm (W) x 6 metre (L)

Size	Code
Extea Fine 15um	993109

NuVedical

\$9.95
/bag

5pcs/bag



Inlay Crown Bridge Setter

Designed for precise inlay setting of crowns and bridges with anti-slip handle. Autoclavable up to 135°C. Size: 142mm (L)

Code	Colour
993105	Green

\$6.10
/box

100pcs/box



Plastic Wedges

Ideal for intraoral dental procedures. These are used to slightly separate the patient's teeth during the placement of a filling material, or to stabilize and support other devices, ie: a matrix band or a rubber dam. Single-use.

Size	Code	Colour
10mm	993100	Blue
12mm	993101	Green
14mm	993102	Yellow
16mm	993103	Purple

MATRIX ACCESSORIES

MATRIX ACCESSORIES



\$59.00
/set



Cervical Former Kit

The kit includes a long, bent holder that is made of stainless steel and 50 pieces of cervical matrices, also available in the form of refills. The holder is autoclavable up to 135°C. The cervical matrices are made of transparent polyester, providing flexibility, rigidity, and adaptability. Ideal for Class 5 fillings and provides smooth-surfaced and non-porous restoration with minimal finishing and polishing work.

Code
993128



\$9.50
/bag

50pcs/bag

Matrices Refill

Made of transparent polyester, providing flexibility, rigidity, and adaptability. Disposable.

Code
993129

Colour
Clear



\$61.95
each

Elliot Matrix Separator For Posterior

Code
997854



\$61.95
each

Ivory Separator For Anterior Teeth

Code
997853



\$135.90
each



Nickel Titanium Separating

NuMedical's Techniques of Composite Resin Restorations COMING SOON.
993122: Powerful type with single protrusion. 993123: With hard tip, adjustable angle in horizontal. Suitable for teeth 4&5 and 5&6. 993124: With soft tip, suitable for periodontities. Suitable for teeth 6&7 and 7&8.

Code	Size
993122	Nickel Titanium
993123	Blue
993124	Orange



\$45.95
/box

Metal Inlay Setter

Designed for precise inlay setting of crowns and bridges. Each box comes with 2 metal handles and 4 silicone pads. Autoclavable up to 135°C. Size: 80mm (L) x 22mm (W)

Code
993104

NuMedical

MATRIX ACCESSORIES

MATRIX ACCESSORIES



\$15.75
/box

40pcs/box

Diamond Wedges

Strong internal spine creates tooth separation, increases seal at proximal box. Collapsing tip for easy placement, rebounds when fully seated. Notched handle for easy to hold, place and remove. Ideal contour to provide matrix/wedge/tooth seal to minimize flash and eliminate overhands. Single-use.

Size	Code	Colour
Extra Small	993114	Yellow
Small	993115	Blue
Medium	993116	Orange
Large	993117	Green
Deep	993118	Pink

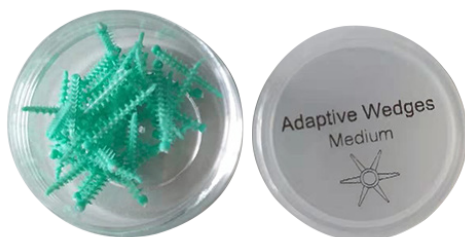


\$26.25
/box

10pcs/box

Wedge Guard

Size	Code	Colour
Large	993119	Purple
Medium	993120	Orange
Small	993121	Green



\$15.75
/bag

40pcs/bag

Adaptive Wedges

With a firm inner plastic core, covered with silicone.

Code	Colour
993113	Green



\$9.95
/box

4pcs/box

Fleximeter Strips

Made from a special silicone material, these strips are flexible measuring instruments in four different thickness sizes; 0.5mm, 1.0mm, 1.5mm and 2.0mm. They are used to measure the height of the preparation on grinding teeth for restoration such as crowns and bridges. They can also be used to enlarge the vertical dimension (height of bite). Autoclavable up to 135°C.

Code	Colour
993130	Green



\$139.00
/box

50pcs/box

Profect Matrice System

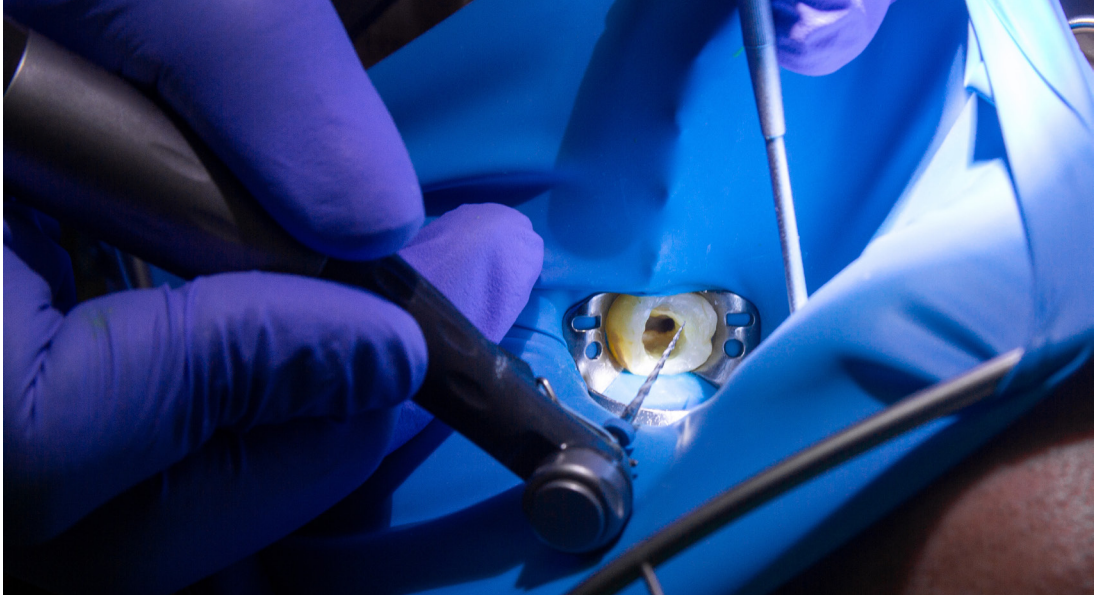


See more details

Size	Code	Colour
4.5mm	997990	Yellow
4.5mm	997991	Red
6.0mm	997992	Blue
6.0mm	997993	Green

Nu2medical

MATRIX ACCESSORIES



MATRIX ACCESSORIES

Nu^omedical