

# NuMedical Mask

NuMedical Mask

Color of Level	Performance Metrics	ASTM F2100-11	EN 14683	AS 4381:2015
ASTM LEVEL 1. Ideal for procedures where low amounts of fluid, spray and/or aerosols are produced.	BFE (%), Bacteria Filtration Efficiency , 3.0 Micron	≥ 95%	≥ 95%	≥ 95%
	PFE (%), Particle Filtration Efficiency, 0.1 Micron	≥ 95%	NA	NA
	Breathability, Differential Pressure (Delta P) mm H <sub>2</sub> O/cm <sup>2</sup>	< 5.0	< 4.0	< 3.9
	Fluid Resistance	80mmHg	NA	80mmHg
	Microbial	NA	≤30	NA
	Flame Spread	Class I	NA	NA

Color of Level	Performance Metrics	ASTM F2100-11	EN 14683	AS 4381:2015
ASTM LEVEL 2. Ideal for procedures where moderate to light amounts of fluid, spray and/or aerosols are produced.	BFE (%), Bacteria Filtration Efficiency , 3.0 Micron	≥ 98%	≥ 98%	≥ 98%
	PFE (%), Particle Filtration Efficiency, 0.1 Micron	≥ 98%	NA	NA
	Breathability, Differential Pressure (Delta P) mm H <sub>2</sub> O/cm <sup>2</sup>	< 6.0	< 4.0	< 4.9
	Fluid Resistance	120mmHg	NA	120mmHg
	Microbial	NA	≤30	NA
	Flame Spread	Class I	NA	NA

Color of Level	Performance Metrics	ASTM F2100-11	EN 14683	AS 4381:2015
ASTM LEVEL 3. Ideal for procedures where heavy to moderate amounts of fluid, spray and or aerosols are produced.	BFE (%), Bacteria Filtration Efficiency , 3.0 Micron	≥ 98%	≥ 98%	≥ 98%
	PFE (%), Particle Filtration Efficiency, 0.1 Micron	≥ 98%	NA	NA
	Breathability, Differential Pressure (Delta P) mm H <sub>2</sub> O/cm <sup>2</sup>	< 6.0	< 6.0	< 4.9
	Fluid Resistance	160mmHg	120mmHg	160mmHg
	Microbial	NA	≤30	NA
	Flame Spread	Class I	NA	NA

- **ARTG Identifier Number: 291129**
- **Performance Metrics Explain:**

#### FLUID RESISTANCE:

- represents mask's resistance to penetration by synthetic blood under pressure(mmHg).
- measures ability of mask's construction to minimize fluids from travelling through the material and potentially coming into contact with the wearer.
- higher the fluid resistance(filtration), the better the protection

#### BFE(Bacterial Filtration Efficiency):

- represents percentage of bacteria filtered out at pore size of 1-5 microns.
- the measure of efficiency of the mask filtering bacteria through it.

#### PFE(Particulate Filtration Efficiency):

- represents percentage of particles filtered out at a pore size of 0.1-1.0 microns.
- the measure of the efficiency of the mask in filtering particles passing through it
- the size of the particles filtered is critical.

# NuMedical Mask

## DELTA P (Differential Pressure):

- represents the pressure drop across the mask or resistance to air flow in mmH<sub>2</sub>O/cm<sup>2</sup>.
- determines breathing resistance.
- higher the Delta P, the less breathability, but the better the filtration.

## FLAME SPREAD:

- measures flame spread of the mask material/

### ● Selection Criteria for Masks:

- Step 1: High particle filtration efficiency(PFE).
- Step 2: High bacterial filtration efficiency(BFE).
- Step 3: High filtration resistance.
- Step 4: Conforms to fit tightly to face.
- Step 5: Does not cause fogging of eyewear.
- Step 6: Fabric does not irritate skin or cause allergic reaction.
- Step 7: Does not contact nose or lips.
- Step 8: Easy to put on and remove.

### ● Selecting the Right Mask for Your Dental Task

ASTM LEVEL 1: Ideal for procedures where low amounts of fluid, spray and/ or aerosols are produced. • Patient exams • Operatory cleaning and maintenance • Impressions • Lab trimming, finishing, and polishing • Orthodontics

ASTM LEVEL 2: Ideal for procedures where light-to-moderate amounts of fluid, spray and/or aerosols are produced. • Limited oral surgery • Endodontics • Prophylaxis • Restorative/composites • Sealants

ASTM LEVEL 3: Ideal for procedures where moderate-to-heavy amounts of fluid, spray, and/ or aerosols are produced. • Complex oral surgery • Crown preparation • Implant placement • Periodontal surgery • Use of ultrasonic scalers (magnetostrictive and piezo) • Laser-based applications

### ● How to Properly Wear Your NuMedical Face Mask



#### Have the exterior layer facing outward.

This ensures the fluid-resilient layer is on the outside to keep droplets from penetrating the mask.



#### For Dual-Fit™ Masks only.

Flexible aluminum closures above the nose and below the chin create additional breathing space and allow for a custom fit.



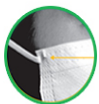
#### Have the pleats open downward.

This prevents pooling of condensate or aerosols that can result in wicking or soaking through the lining layer.



#### Do not twist the ear loops for a closer fit.

This causes the inner lining to be in close contact with your lips and nose, which leads to increased condensation and risk of contamination.



#### Have the earloop outward.

Have earloop outward. Unique design significantly reduces gapping at top, bottom and sides greatly reducing the risk of infection.



#### Do not wear a loose mask that has gaps on the sides or under the chin.

This can result in an increased likelihood of exposure to contaminants.



#### Do not pinch the outside of the noseband with your thumb and index finger.

The exposed v-notch across the bridge of the nose and across the eyes has the most potential for gaps. Beginning at the bridge, smooth and shape the noseband to conform to your face.



#### Avoid facial hair that may make mask fitting difficult.

Masks that fit well and minimize gaps protect you better. To achieve an optimal fit, beards should be shaved or trimmed close to the face.



#### Fully extend the mask.

This ensures your mouth, chin, and nose are properly protected by the mask.

# NuMedical Mask

NuMedical Mask

NuMedical

## ● How to Properly Wear Your NuMedical Face Mask



**Surgical masks are designed, manufactured, and TGA -cleared as a single-use medical device**



**The protective filtration quality goes down with use.**

- The outside becomes soiled from exposure to splatter and aerosols.
- The inside becomes soiled from your breath.



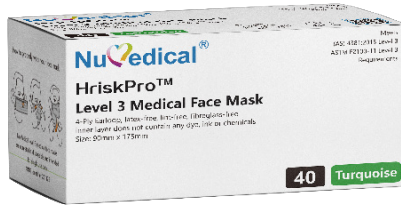
**Airborne microorganisms can then penetrate the wet fabric.**



**Recommendation is to change your mask every 20 minutes in a moderate-to-high aerosol environment.<sup>2</sup>**



# NuMedical Mask



**ANTIFOG™**  
TECHNOLOGY



Scan it for price



Brand of HriskPro,  
4-ply Medical Mask,  
Level 3, 40pcs/box,  
Size:90mm x 175mm

**FREE  
SAMPLES!**

Code	Colour
992346	Turquoise



**ANTIFOG™**  
TECHNOLOGY



Scan it for price



Brand of HriskPro, 4-ply  
Medical Mask w/Anti-Fog,  
Level 3, 40pcs/box,  
Size:90mm x 175mm

**FREE  
SAMPLES!**

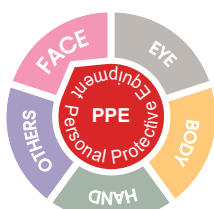
Code	Colour
992264	Black



**ANTIFOG™**  
TECHNOLOGY



Scan it for price



Brand of HriskPro,  
4-ply Medical Mask  
w/visor & Anti-Fog,  
Level 3, 25pcs/box,  
Size:90mm x 175mm

**FREE  
SAMPLES!**

Code	Colour
992343	Turquoise

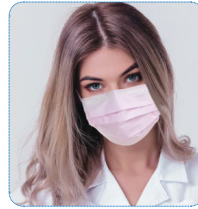
NuMedical Mask

NuMedical



# NuMedical Mask

NuMedical Mask



Scan it for price

Level 2 Medium Risk

**FREE  
SAMPLES!**

**Lady & Child Medical  
Mask, 3-ply, Level 2,  
50pcs/box,  
Size:90mm x 156mm**

Code	Colour
992233	Pink



Scan it for price

Level 2 Medium Risk

**FREE  
SAMPLES!**

**Earloop Natural Lady &  
Child  
Medical Mask, 3-ply, Level  
2, 50pcs/box,  
Size:90mm x 156mm**

Code	Colour
992235	Neon-Blue
992236	Neon-Pink
992237	Neon-Purple



Scan it for price

Level 2 Medium Risk

**FREE  
SAMPLES!**

**Earloop Natural Medical  
Mask, 3-ply, Level 2,  
50pcs/box,  
Size:90mm x 175mm**

Code	Colour
992208	Blue



# NuMedical Mask



Scan it for price

ANTIFOG™  
TECHNOLOGY



FREE  
SAMPLES!

Level 2 Medium Risk

Brand of SpluSpro, Level 2,  
3-ply Medical Mask with  
Anti-Fog, 40pcs/box,  
Size:90mm x 175mm



Code	Colour
992288	Blue



Scan it for price

ANTIFOG™  
TECHNOLOGY



FREE  
SAMPLES!

Level 2 Medium Risk

Brand of SpluSpro, Level 2,  
3-ply Medical Mask with  
Anti-Fog, 40pcs/box,  
Size:90mm x 175mm



Code	Colour
992289	Pink



Scan it for price

ANTIFOG™  
TECHNOLOGY



FREE  
SAMPLES!

Level 2 Medium Risk

MedMaskPro, Level 2,  
3-Ply Medical Mask,  
100pcs/box,  
Size:90mm x 175mm



Code	Colour
992228	Blue



Scan it for price

ANTIFOG™  
TECHNOLOGY



FREE  
SAMPLES!

Level 2 Medium Risk

MedmaskPro, Level 2,  
3-Ply Medical Mask,  
100pcs/box,  
Size:90mm x 175mm



Code	Colour
992229	Pink



Scan it for price

ANTIFOG™  
TECHNOLOGY



FREE  
SAMPLES!

Level 2 Medium Risk

Brand of SpluSpro, Level 2,  
3-ply Medical Mask w/  
visor  
& Anti-Fog, 25pcs/box,  
Size:90mm x 175mm



Code	Colour
992286	Blue



Scan it for price

ANTIFOG™  
TECHNOLOGY



FREE  
SAMPLES!

Level 2 Medium Risk

Brand of SpluSpro, Level 2,  
3-ply Tie-on Medical Mask,  
50pcs/box,  
Size:107mm x 175mm



Code	Colour
992322	Blue

NuMedical Mask

NuMedical



# NuMedical Mask

NuMedical Mask



Scan it for price



FREE SAMPLES!

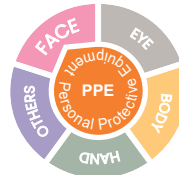
Level 2 Medium Risk

**MedmaskPro, Level 2,  
3-Ply Medical Mask  
Printing, 50pcs/box,  
Size:90mm x 175mm**

Code	Colour
992200	Floral Blue



Scan it for price



FREE SAMPLES!

Level 2 Medium Risk

**MedmaskPro, Level 2,  
3-Ply Medical Mask  
Printing, 50pcs/box,  
Size:90mm x 175mm**

Code	Colour
992201	Floral Pink



Scan it for price

FREE SAMPLES!



Level 2 Medium Risk

**MedmaskPro, Level 2,  
3-Ply Medical Mask  
Printing, 50pcs/box,  
Size:90mm x 175mm**



Code	Colour
992205	Blue Zoe



Scan it for price

FREE SAMPLES!



Level 2 Medium Risk

**MedmaskPro, Level 2,  
3-Ply Medical Mask  
Printing, 50pcs/box,  
Size:90mm x 175mm**



Code	Colour
992206	Pink Zoe



KITTY



DOGGY



BUNNY



Scan it for price



KITTY



DOGGY



BUNNY



Level 2 Medium Risk

**MedmaskPro, 3-Ply Medical Mask Printing, Level 2, 50pcs/box,  
Size:90mm x 175mm**

FREE SAMPLES!

Print	Code
Kitty	992269
Doggy	992271
Bunny	992272

# NuMedical Mask



Level 1 Low Risk



Scan it for price

**FREE  
SAMPLES!**

**3-Ply Medical Mask,  
Level 1, 500pcs/box,  
Size:90mm x 175mm**

Code	Colour
992226	Yellow



Level 2 Medium Risk

**DUALFIT™**  
TECHNOLOGY



Scan it for price

**FREE  
SAMPLES!**

**3-PLY MEDICAL MASK with Dual-  
fit Technology, LEVEL 2, 100PCS/  
BOX,  
Size:90mm x 175mm**

Code	Colour
992273	Black



**Covers patient's eyes and nose.  
PATIENT SAFETY  
MASK WITH SHIELD,  
50PCS/BOX,-  
Size:300mm x 160mm**

**FREE  
SAMPLES!**



Scan it for price



Covers patient's eyes and nose for increased safety  
Protects fragile eye and mucosal tissue from flying particles, spray and splatter  
The additional protective cover can provide visual effects for patients and dentists. It can filter the damage to patients' eyes caused by the strong light generated by the dental chair and the curing light.  
Form-fitting profile and flexible materials provide maximum access to mouth  
Fluid resistant, white spunbond inner and outer layers  
Not made with natural rubber latex

Code
992355

NuMedical Mask

NuMedical

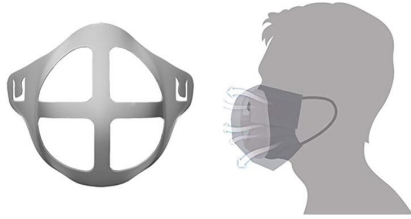


# NuMedical Mask

NuMedical Mask

## 3D Mask Bracket

More space to breathe & protect yourself



### NuMedical 3D Face Mask Bracket

NuMedical 3D Face Mask Bracket -Made of food grade PP - Space mask for glasses wearers - Mask inserts for breathing room- Comfortable Adult 3D mask guard- Face bracket Accessories.

#### FEATURES:

**Size** - About 10.3\*8.2\*4.2 cm , enough space size for all kinds of face mask. **Help Breathing Easier** - Face bracket holds up the mask fabric around the mouth and nose to create more breathing space for smoothly breathing and reduce the feeling of wetness for comfortable wearing. **Your Make Up Saver** - The face-covering inner support frame reduces the friction frequency between mask and face to protect your makeup from being messed up and the lining from getting stained. **Washable & Reusable** - The Mask bracket internal support frame is made from food grade PP material, gentle on the skin, easy to rinse off with soap and water for multiple uses. **Package** - 1 Pack with 10Pieces 3D Mask Bracket Frame (Not Including Face Mask or Cloth others)

\$7.95 /bag

10 pcs/bag

Code  
992370

### Extension Buckle, Ear Protectors, Mask Ear Protectors Accessories, Size:175mm x 20mm



**SAFE:** Made of food grade PP materials. **EASY TO CARRY:** The length is 175mm, width is 20mm and weight is 0.004kg. **NON-SLIP:** Anti-slip groove on the back to prevent slipping when wearing. **SUITABLE:** With third gear adjustment (Can be used by children / small faces / big faces).

**FEATURE:** Reduce the pain and stress of wearing a mask for a long time. This Extension buckle can be washed repeatedly without bending, abrasion, curling or other types of degradation. Fits perfectly to your head, and surrounds for maximum comfort. Suitable for working, school, hospital, running, cycling, hiking, skiing, motorcycle climbing, climbing tactic training and other activities. Suitable for over-ear(N95 mask,Surgical mask,Disposable medical mask,Dust mask,medical face mask disposable breathable)The biggest function of the mask decompression artifact is to protect our ears from prolonged use of the mask and cause ear pain. With three gear adjustments (can be used for children / small faces / large faces).

\$4.25 /bag

10 pcs/bag



View Details

Code Colour  
992359 Blue



### Face Mask Dispenser

Ideal for storing face masks. Pre-drilled holes for wall-mounting. Size: 210mm (L) x 110mm (W) x 130mm (H) Cleaning instructions: Use only soap and water on acrylic surface. Alcohol or ammonia-based disinfectants may cause cracks to appear. Note: Mask not included.

\$19.95 each

Code  
992371

NuMedical

# NuMedical Mask



NuMedical Mask



**Nu**  
  
**Medical**